

TRIDEL[®]
BUILT FOR LIFE

ROWNTREE[™]
ENTERPRISES



AUBERGE II
ON THE PARK[™]



AUBERGE II



Illustration is the artist's concept only. Specifications subject to change without notice. E. & O.E. January 2018.



THE LOBBY

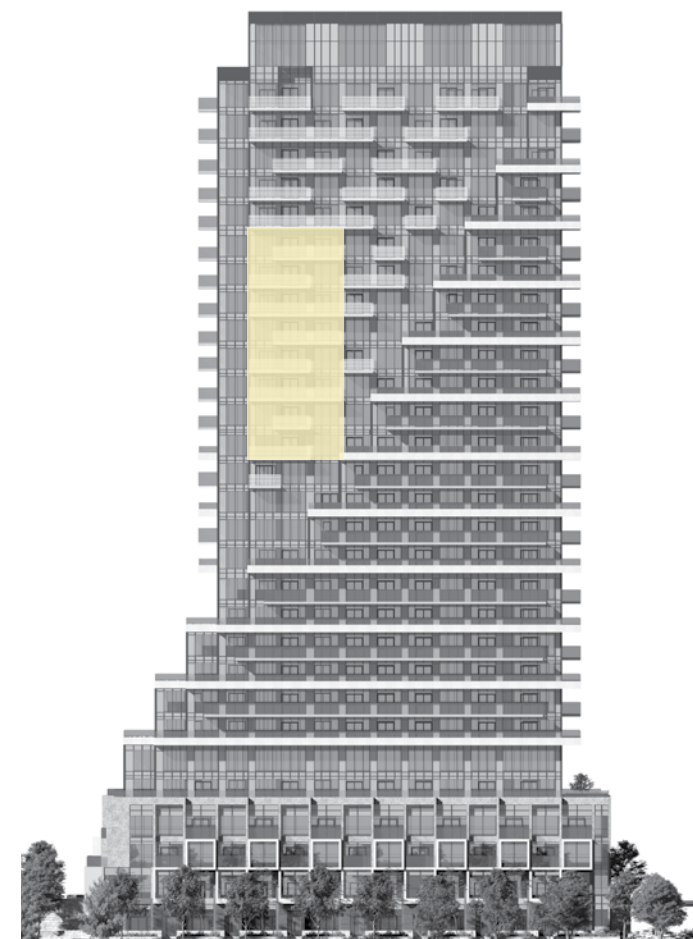


FLOORPLANS

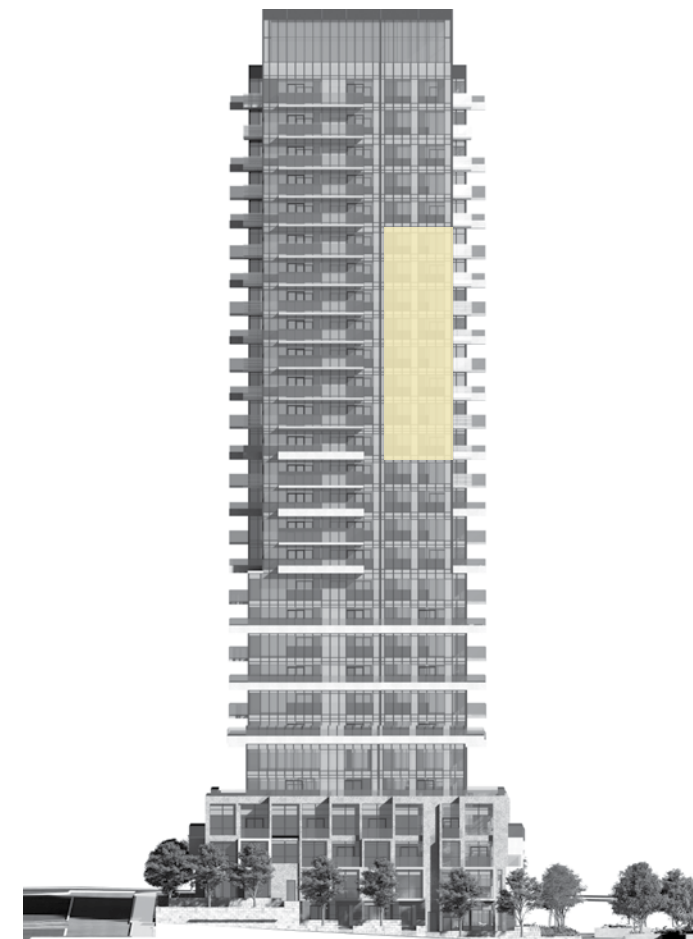
AUBERGE II ON THE PARK

2A-2

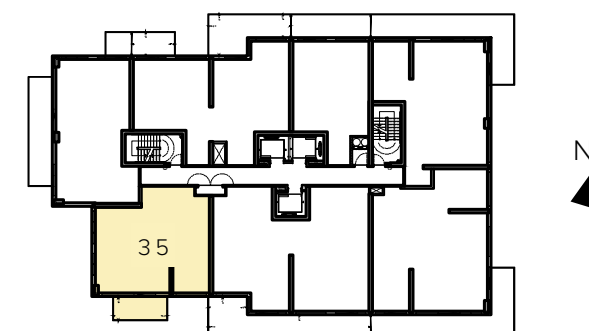
2 BEDROOM
2 BATHROOM



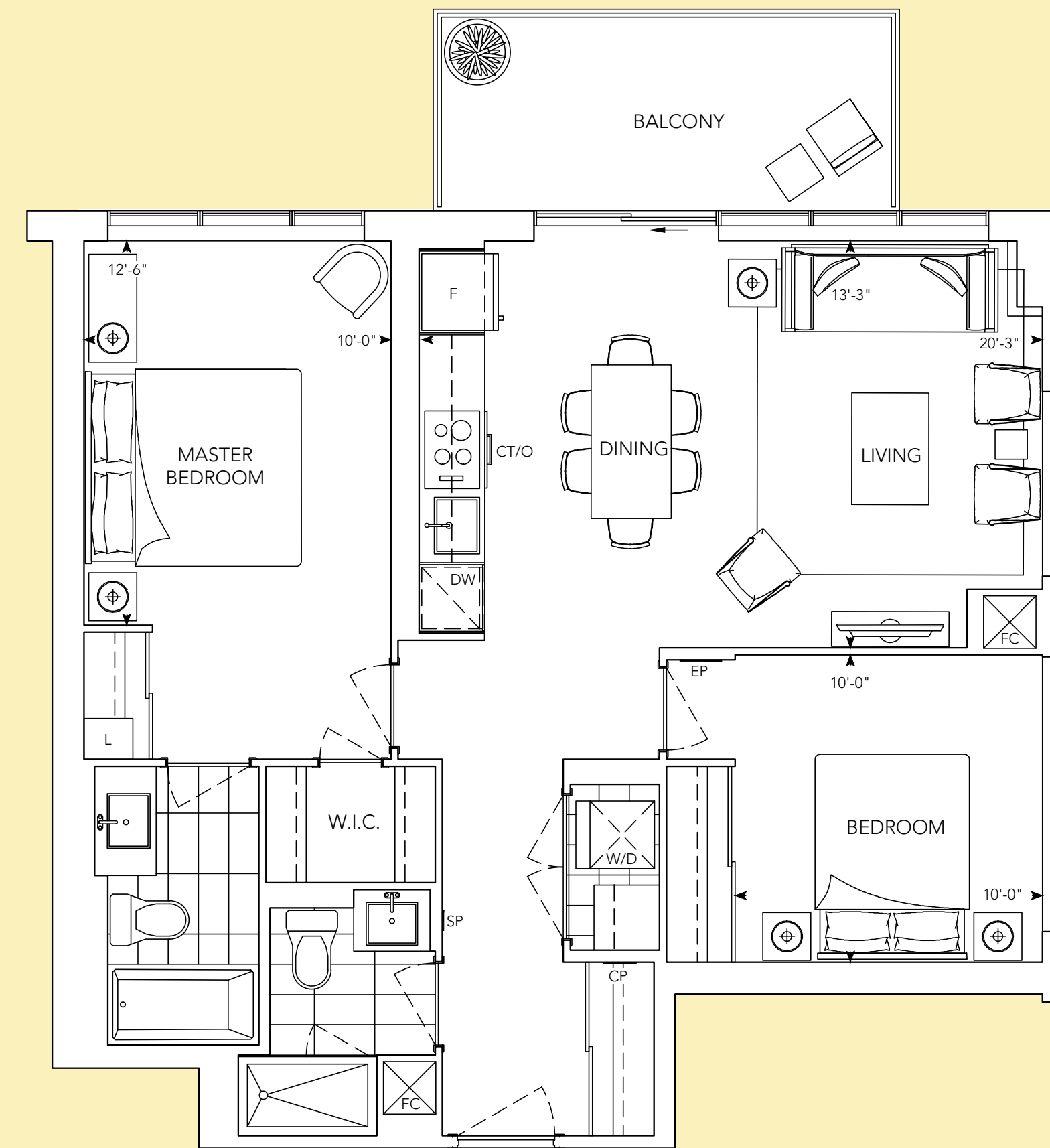
SOUTH FACE



WEST FACE

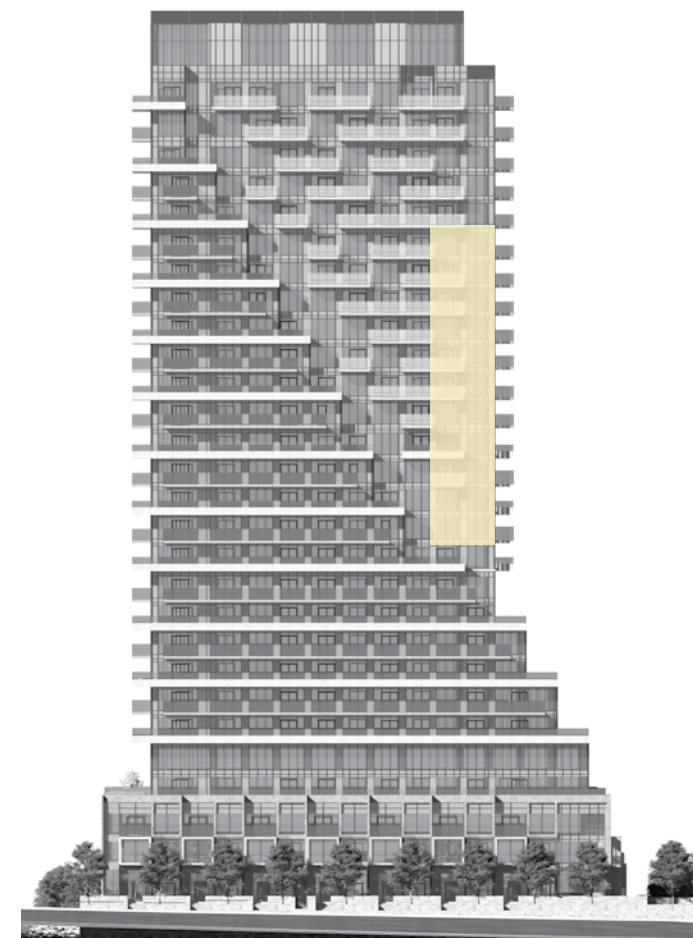


FLOOR 17

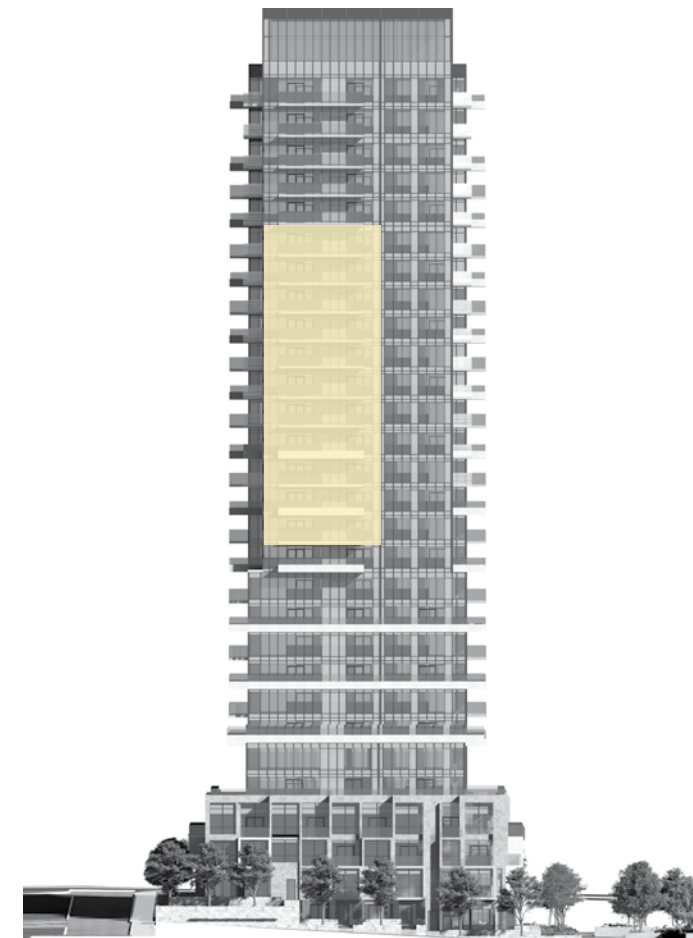


2B-2

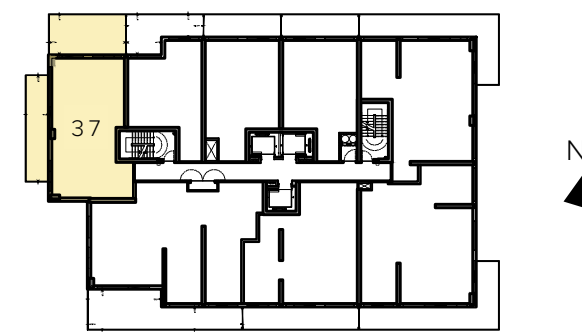
2 BEDROOM
2 BATHROOM



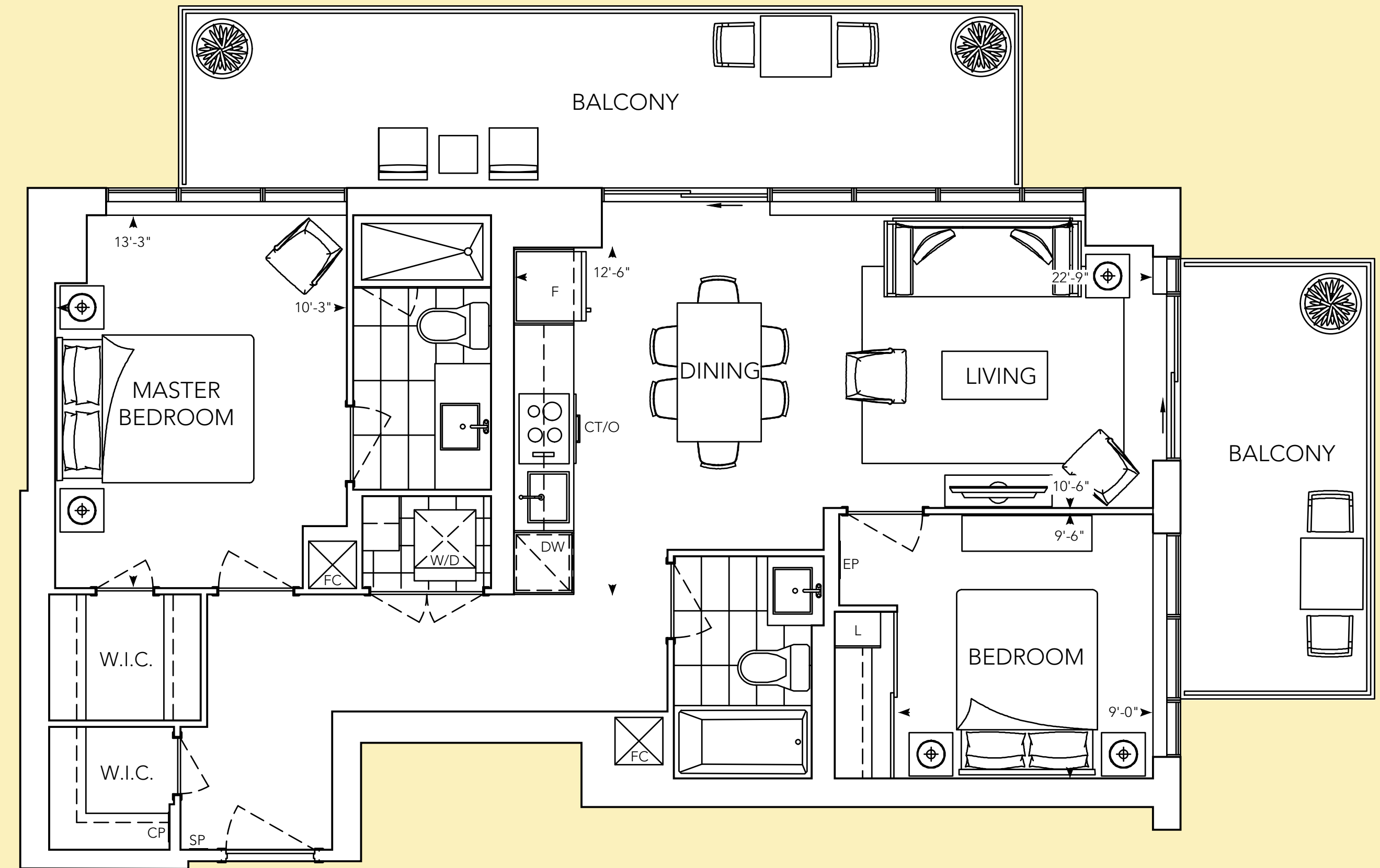
NORTH FACE



WEST FACE

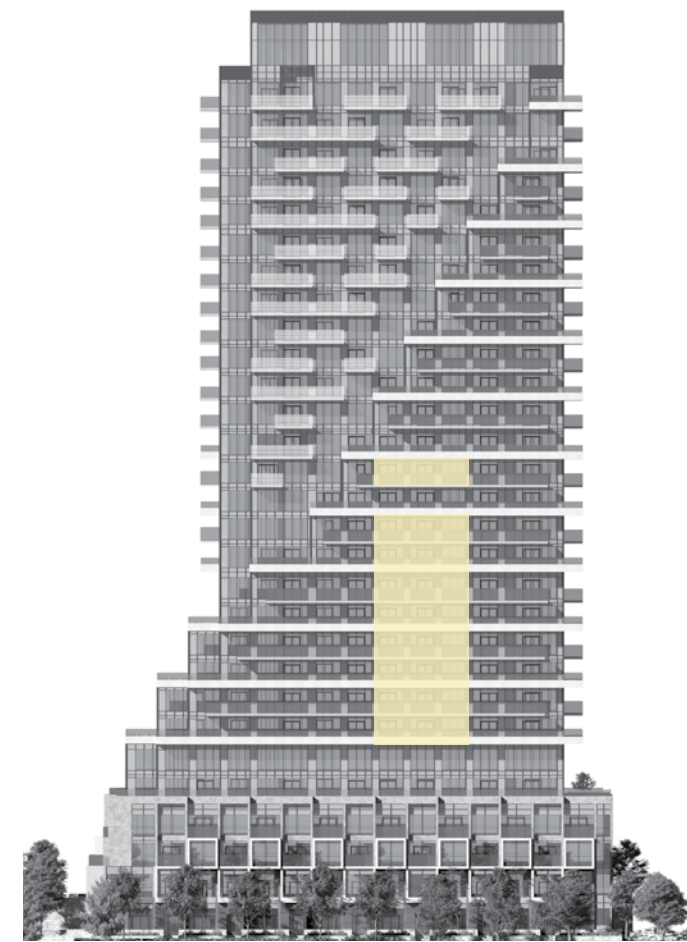


FLOOR 13

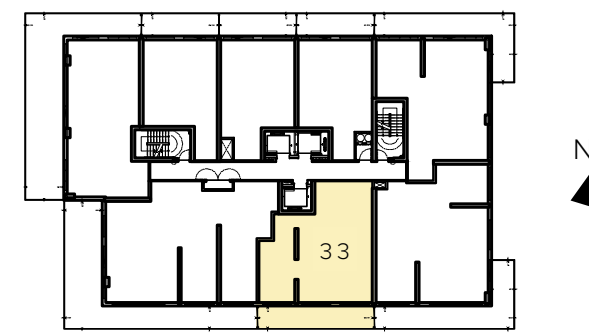


2C+D-2

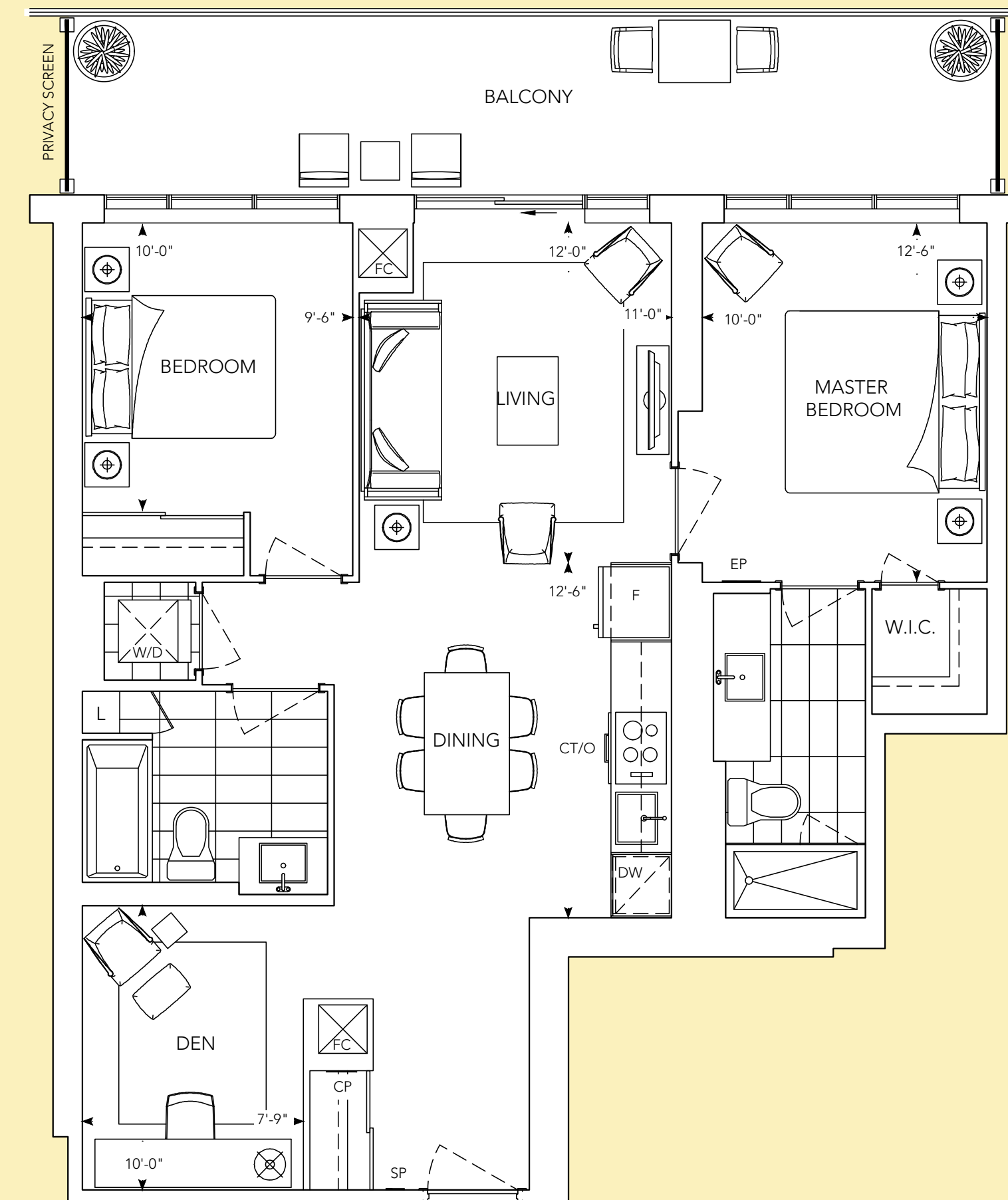
2 BEDROOM
2 BATHROOM
DEN



SOUTH FACE



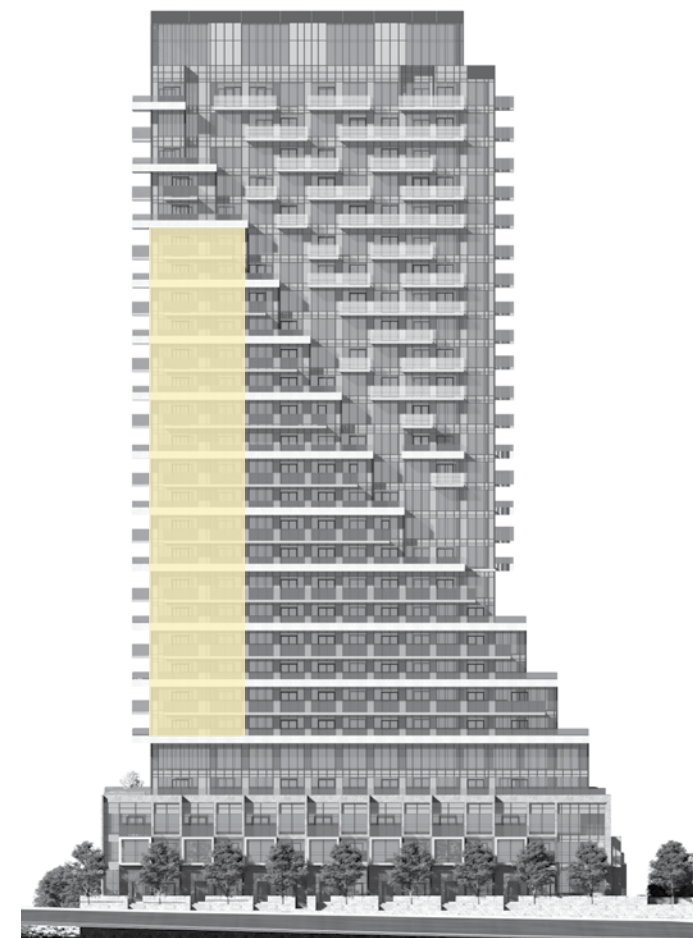
FLOOR 11



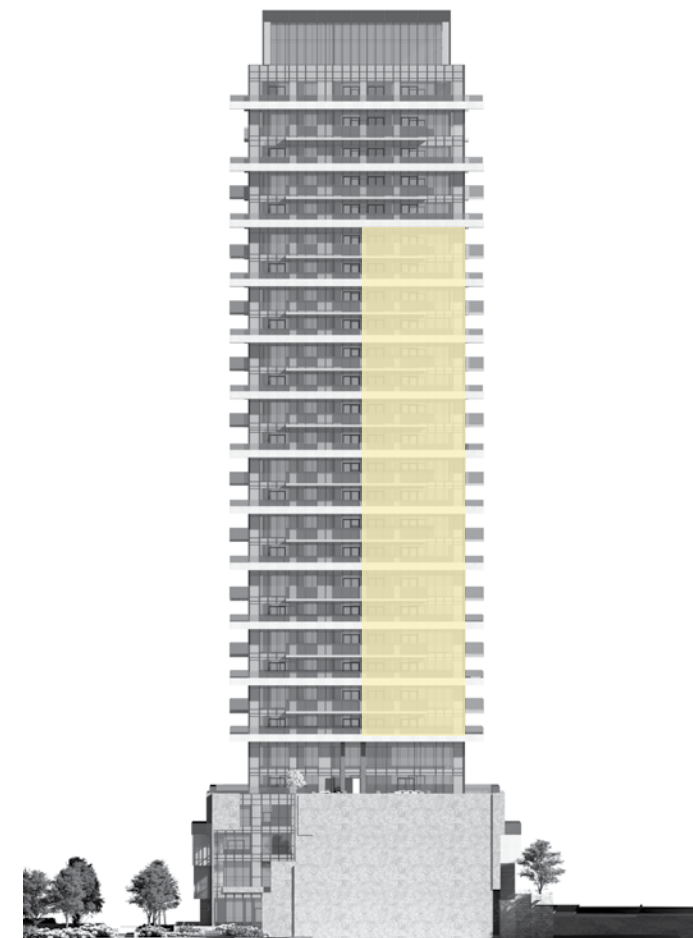
All dimensions are approximate and subject to normal construction variances. Dimensions may exceed the useable floor area. Sizes and specifications subject to change without notice. Furniture is displayed for illustration purposes only and does not necessarily reflect the electrical plan for the suite. Suites are sold unfurnished. Balcony and façade variations may apply, contact a sales representative for further details. E.&O.E. Tridel, Tridel Built for Life and Tridel Built Green. Built for Life are registered trademarks of Tridel and used under license. ©Tridel 2018. All rights reserved. January 2018.

2D-2

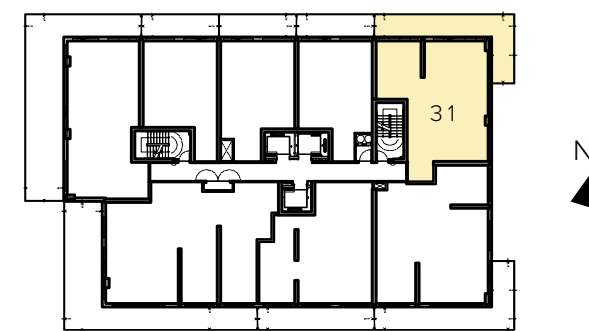
2 BEDROOM
2 BATHROOM



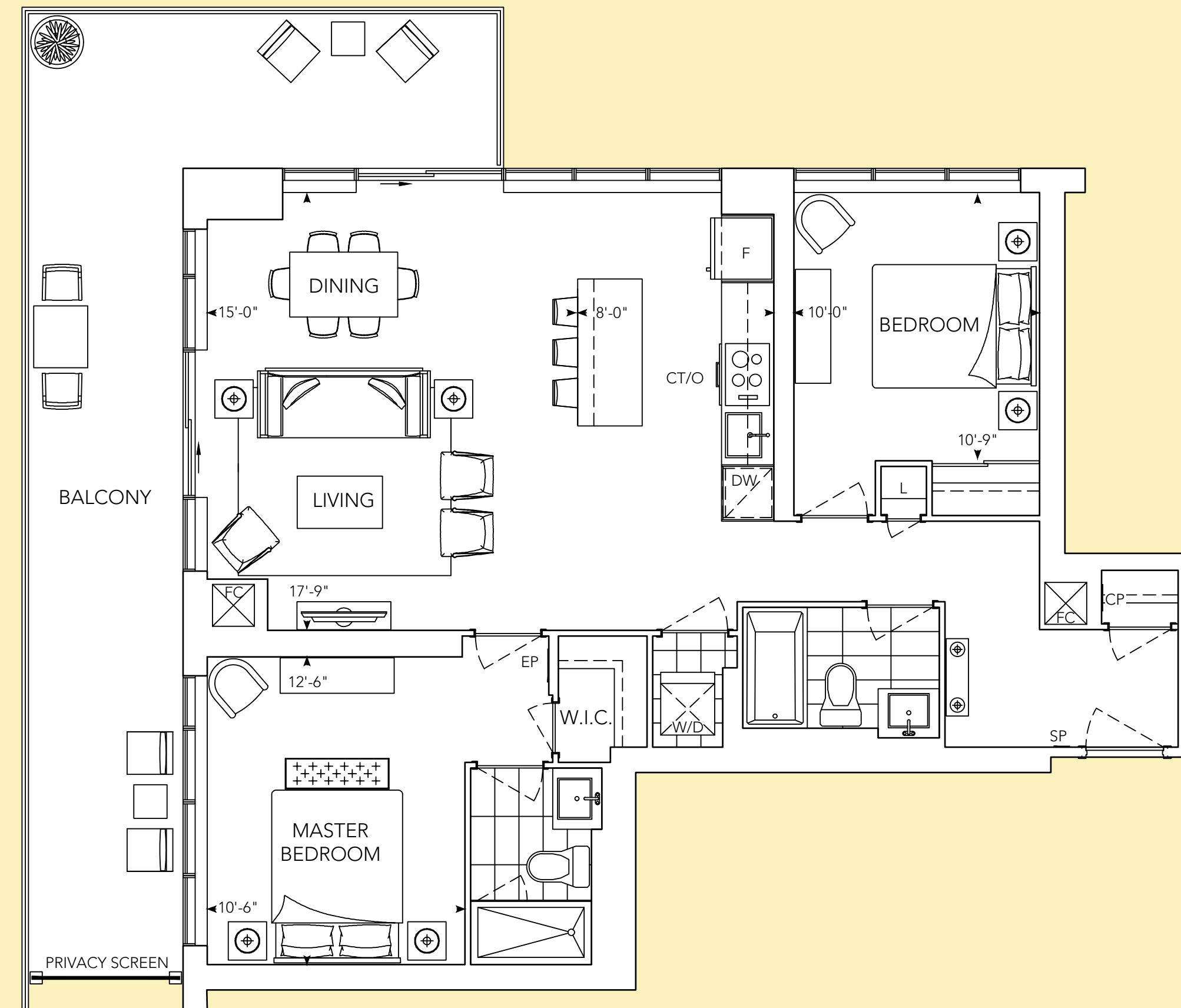
NORTH FACE



EAST FACE



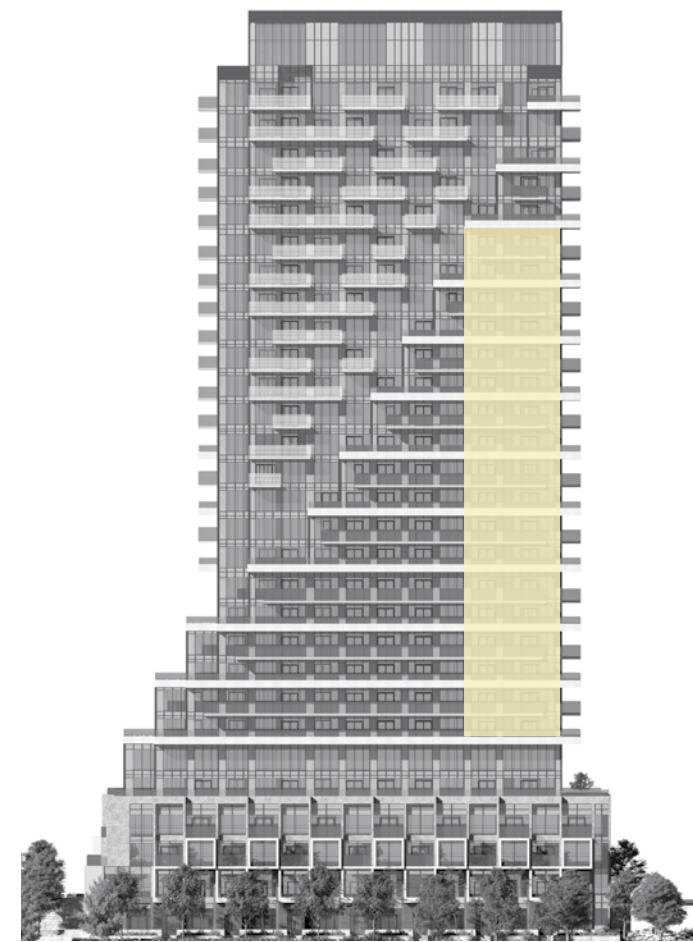
FLOOR 11



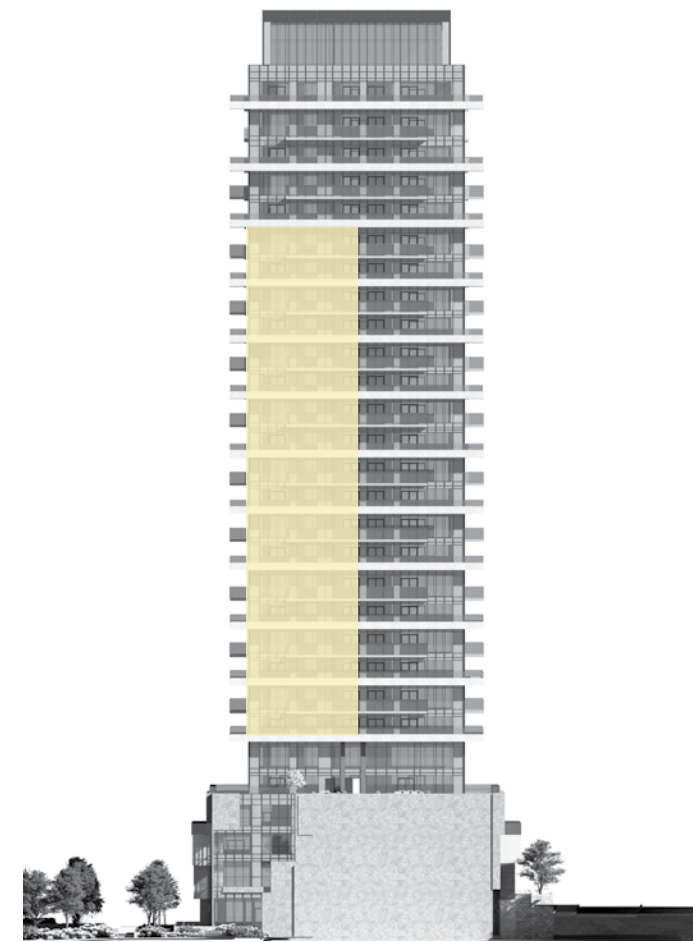
All dimensions are approximate and subject to normal construction variances. Dimensions may exceed the useable floor area. Sizes and specifications subject to change without notice. Furniture is displayed for illustration purposes only and does not necessarily reflect the electrical plan for the suite. Suites are sold unfurnished. Balcony and façade variations may apply, contact a sales representative for further details. E.&O.E. Tridel, Tridel Built for Life and Tridel Built Green. Built for Life are registered trademarks of Tridel and used under license. ©Tridel 2018. All rights reserved. January 2018.

2E-2

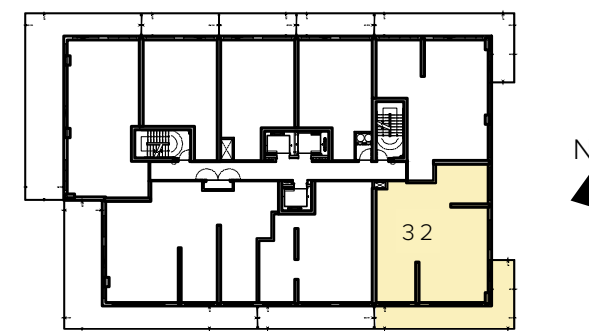
2 BEDROOM
2 BATHROOM



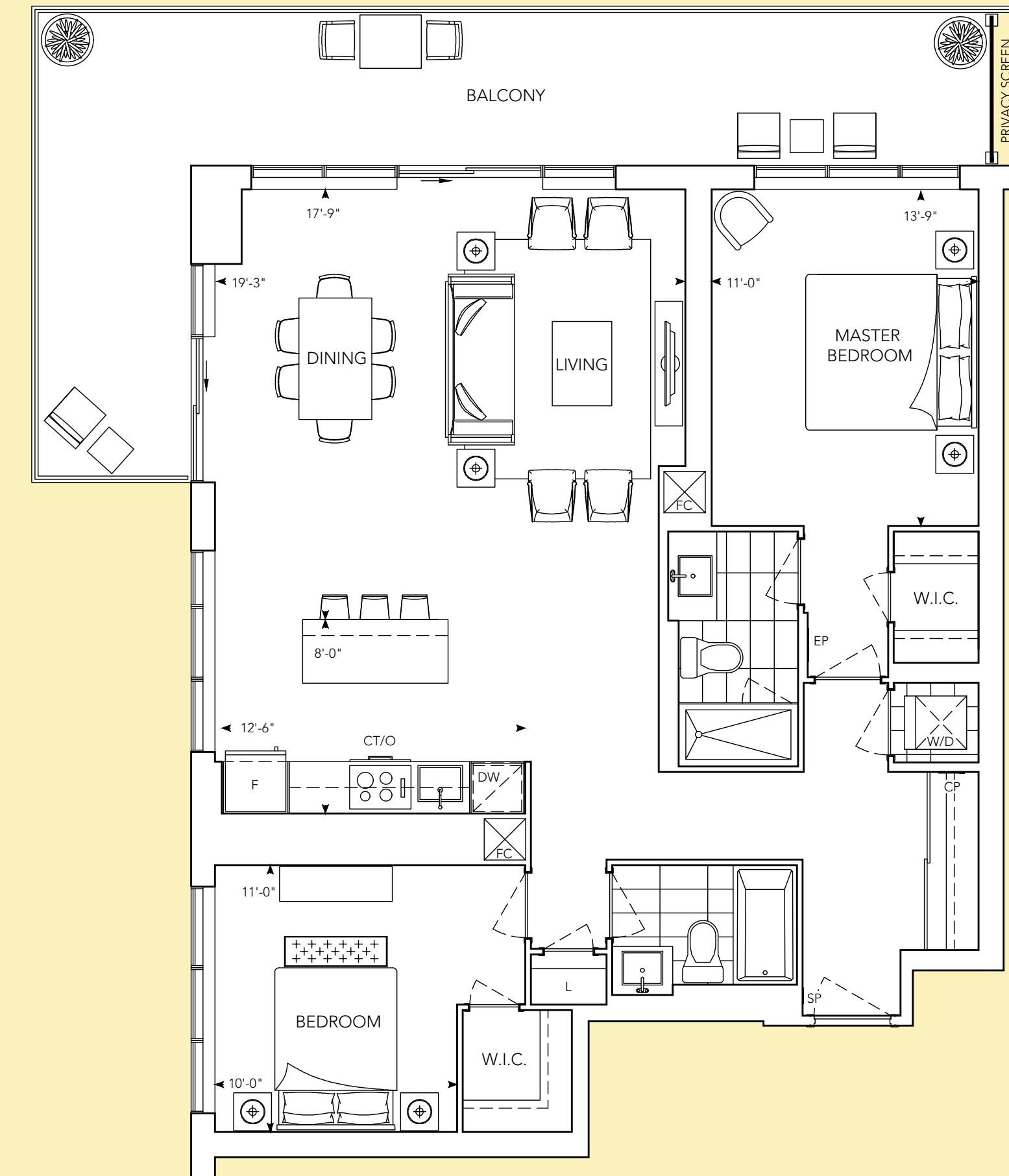
SOUTH FACE



EAST FACE

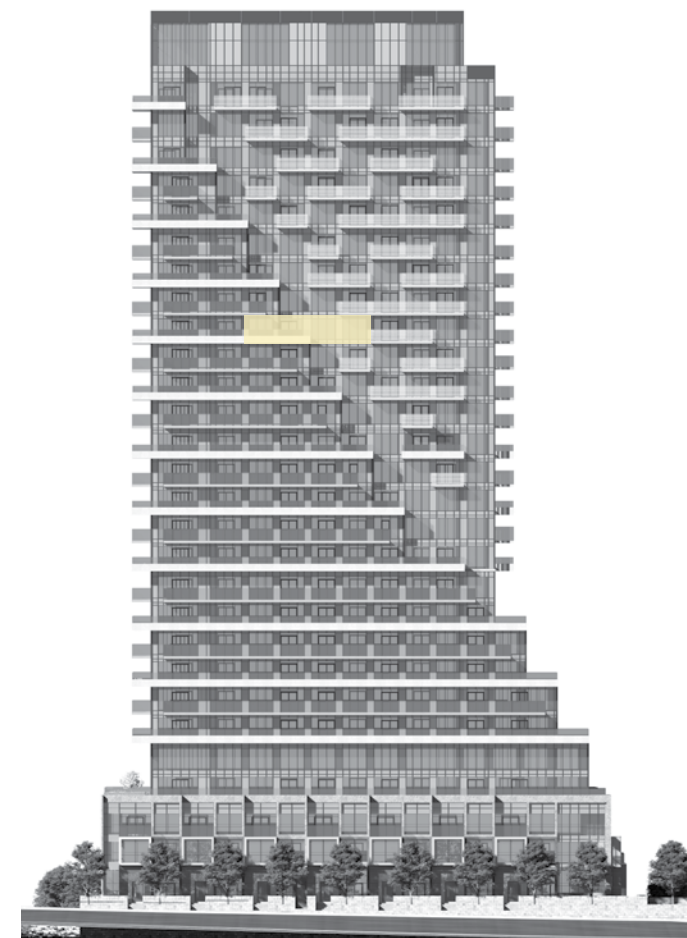


FLOOR 11

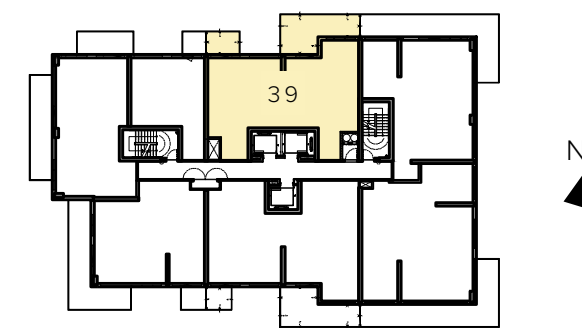


2NAT-2

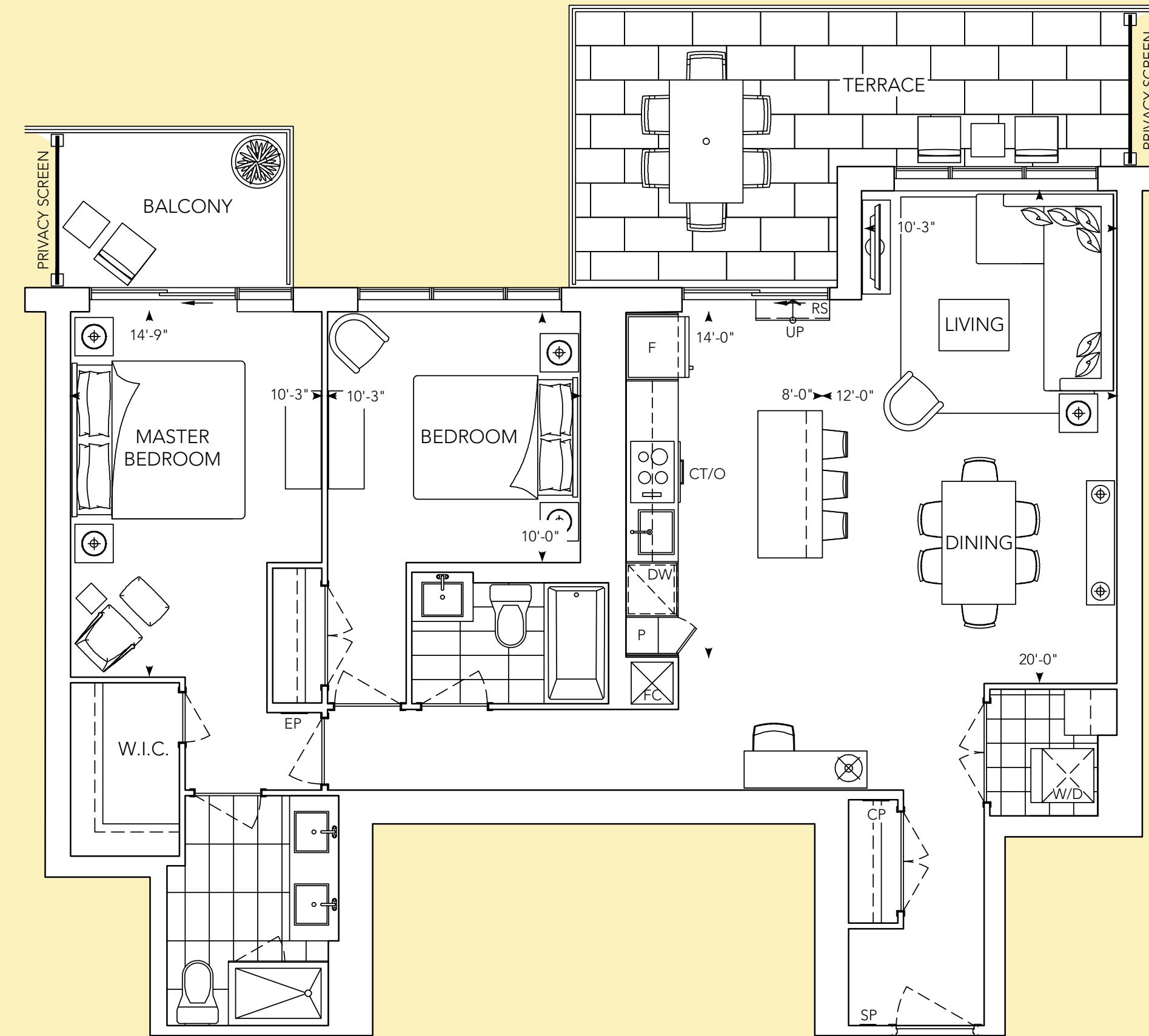
2 BEDROOM
2 BATHROOM



NORTH FACE



FLOOR 21



All dimensions are approximate and subject to normal construction variances. Dimensions may exceed the useable floor area. Sizes and specifications subject to change without notice. Furniture is displayed for illustration purposes only and does not necessarily reflect the electrical plan for the suite. Suites are sold unfurnished. Balcony and facade variations may apply, contact a sales representative for further details. E.&O.E. Tridel, Tridel Built for Life and Tridel Built Green. Built for Life and Tridel Built Green are registered trademarks of Tridel and used under license. ©Tridel 2018. All rights reserved. January 2018.

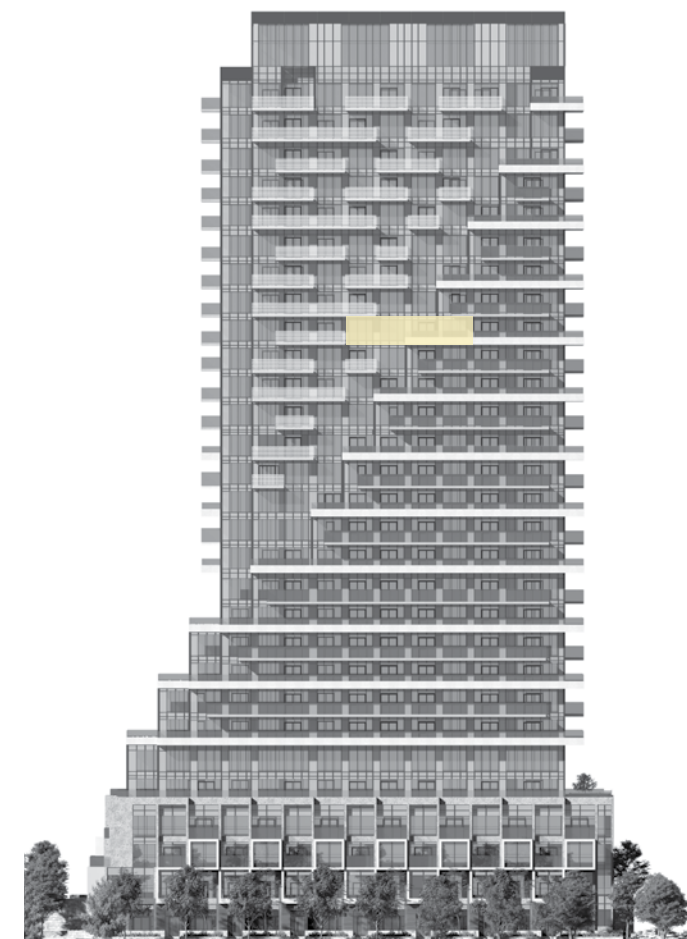


SIGNATURE SUITES

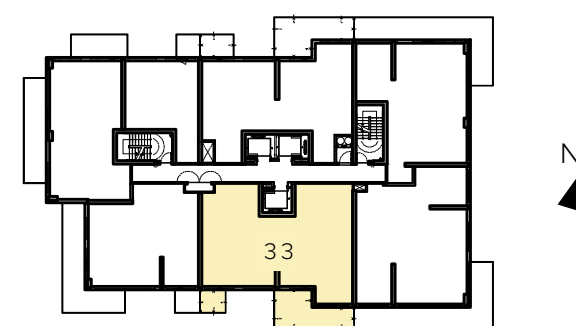
AUBERGE II ON THE PARK

2PAT-2

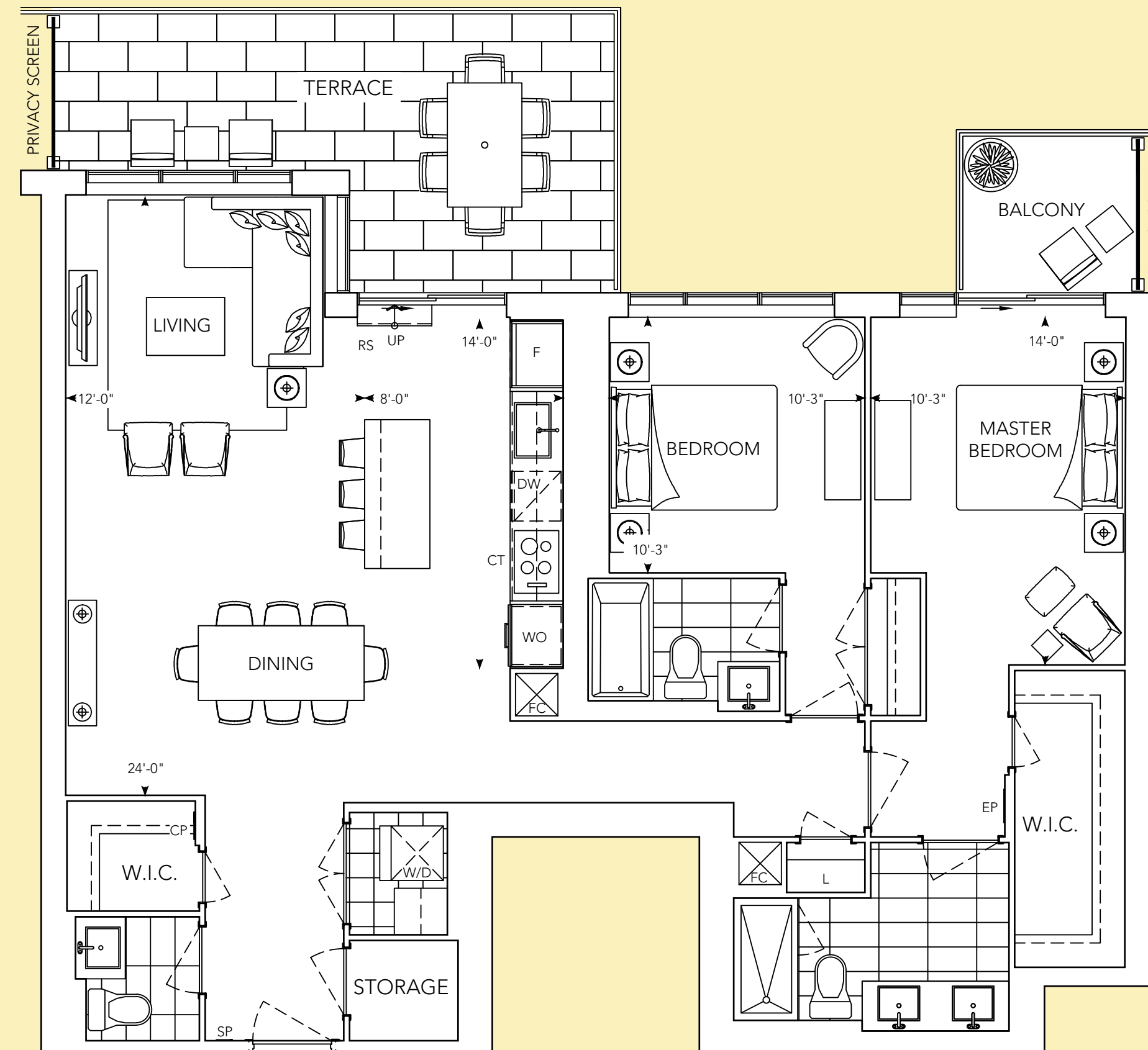
2 BEDROOM
2.5 BATHROOM



SOUTH FACE



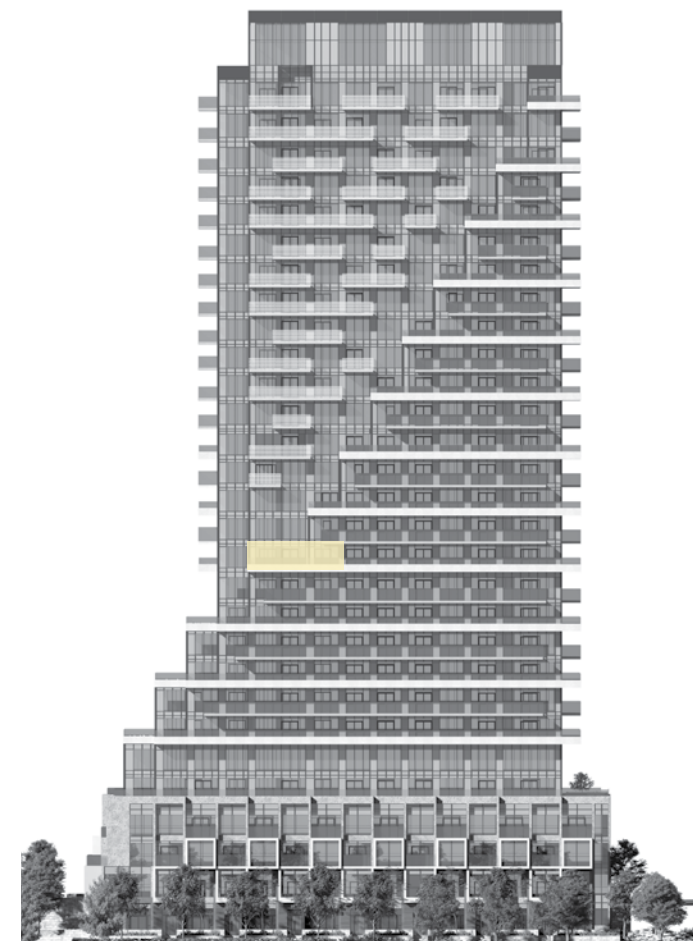
FLOOR 21



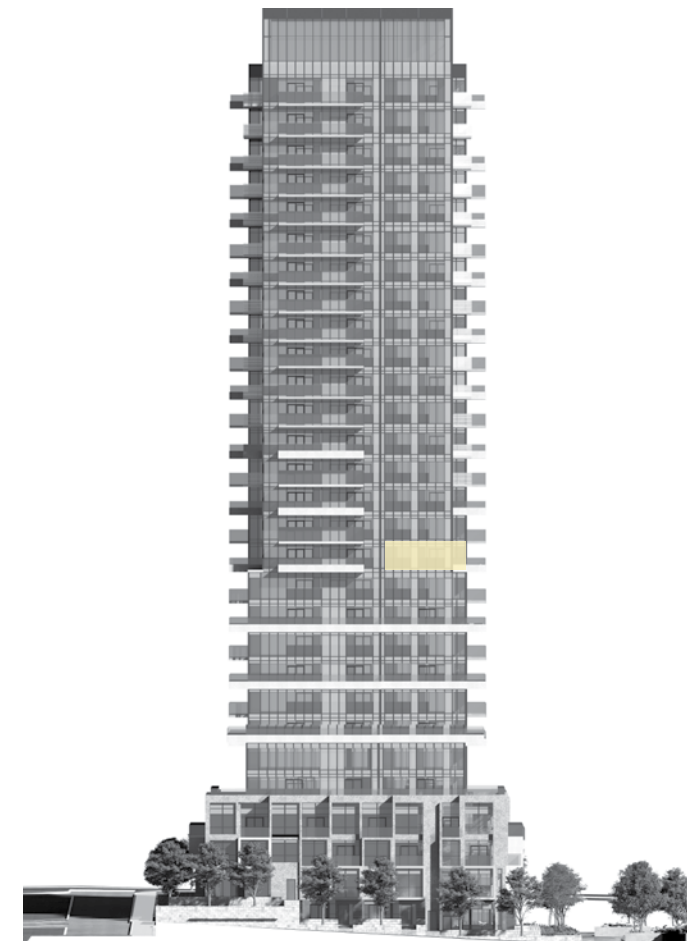
All dimensions are approximate and subject to normal construction variances. Dimensions may exceed the useable floor area. Sizes and specifications subject to change without notice. Furniture is displayed for illustration purposes only and does not necessarily reflect the electrical plan for the suite. Suites are sold unfurnished. Balcony and façade variations may apply, contact a sales representative for further details. E.O.E. Tridel, Tridel Built for Life and Tridel Built Green. Built for Life are registered trademarks of Tridel and used under license. ©Tridel 2018. All rights reserved. January 2018.

2ST-2

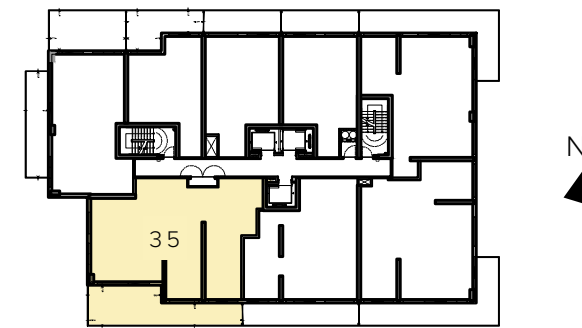
2 BEDROOM
2.5 BATHROOM



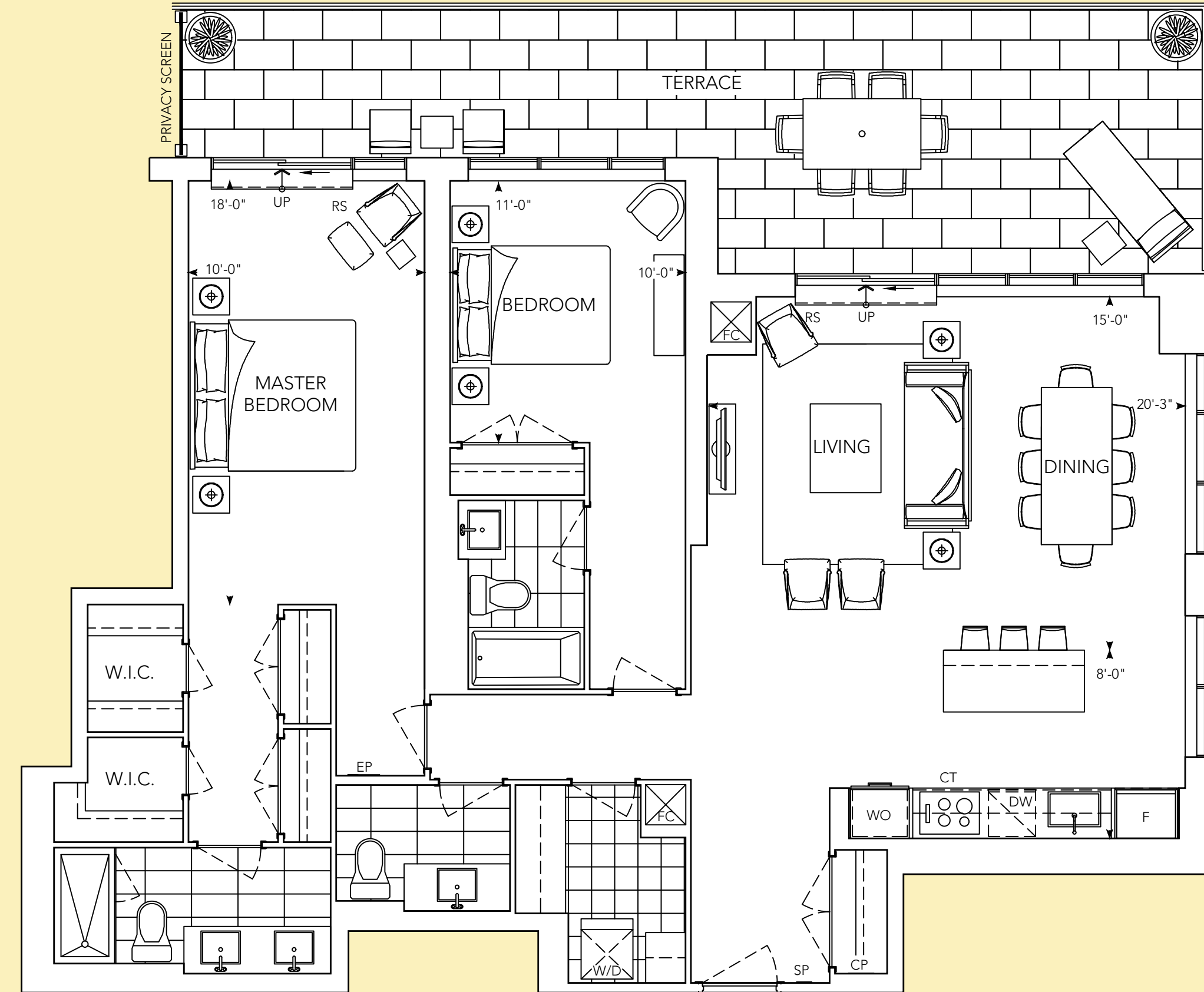
SOUTH FACE



WEST FACE



FLOOR 13



All dimensions are approximate and subject to normal construction variances. Dimensions may exceed the useable floor area. Sizes and specifications subject to change without notice. Furniture is displayed for illustration purposes only and does not necessarily reflect the electrical plan for the suite. Suites are sold unfurnished. Balcony and façade variations may apply, contact a sales representative for further details. E.&O.E. Tridel, Tridel Built for Life and Tridel Built Green. Built for Life and Tridel Built Green are registered trademarks of Tridel and used under license. ©Tridel 2018. All rights reserved. January 2018.

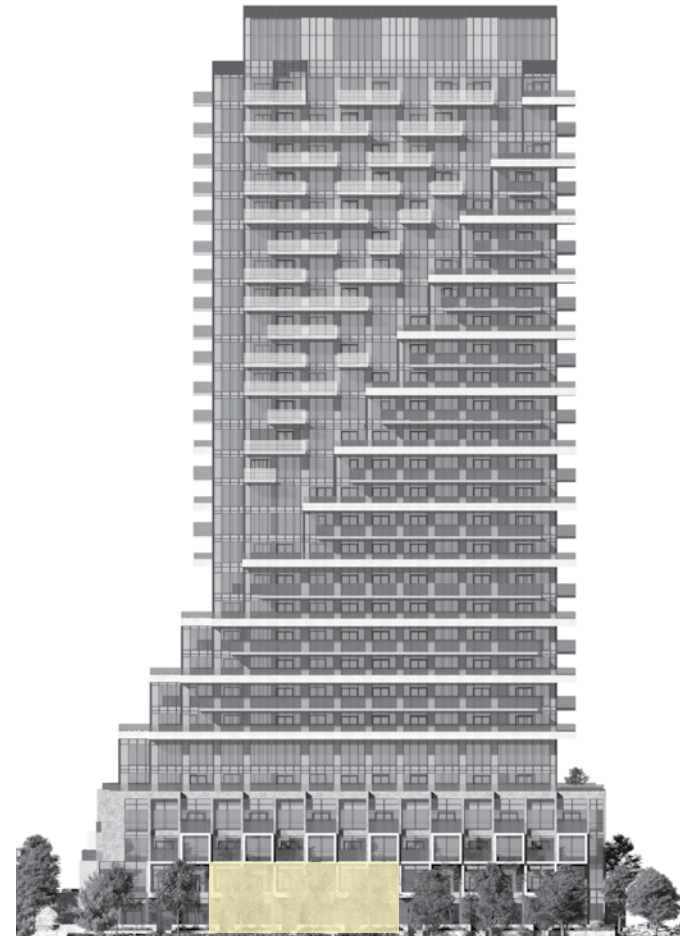


TOWNHOMES

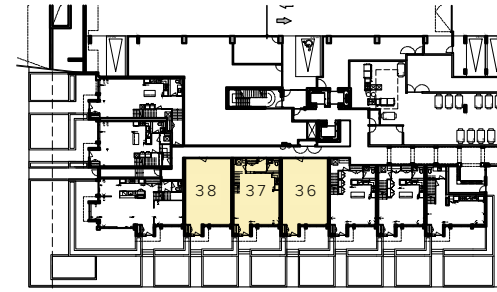
AUBERGE II ON THE PARK

TH4

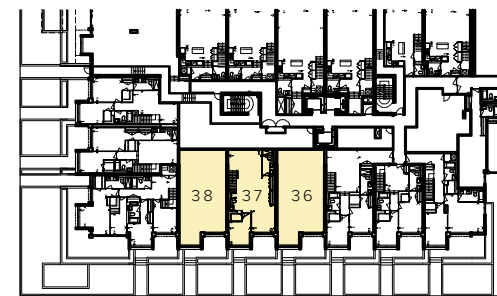
2 BEDROOM
2.5 BATHROOM
FAMILY ROOM



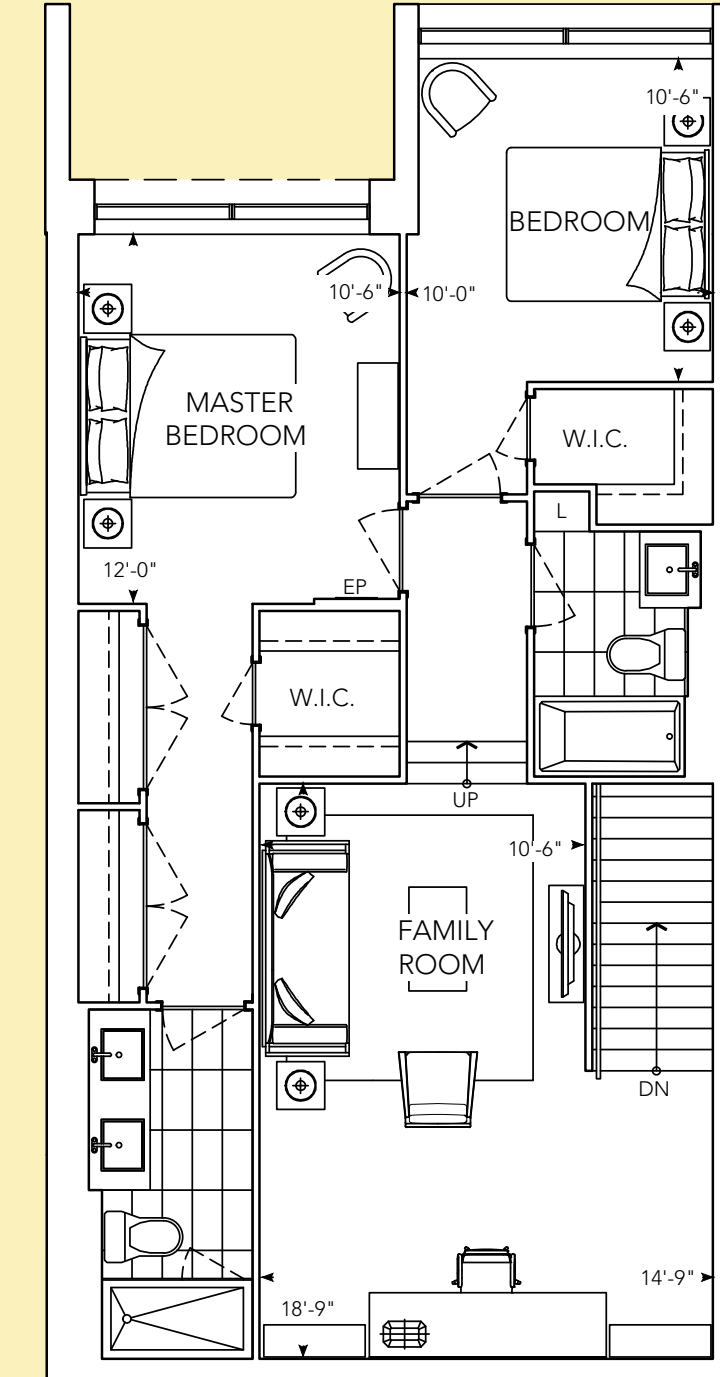
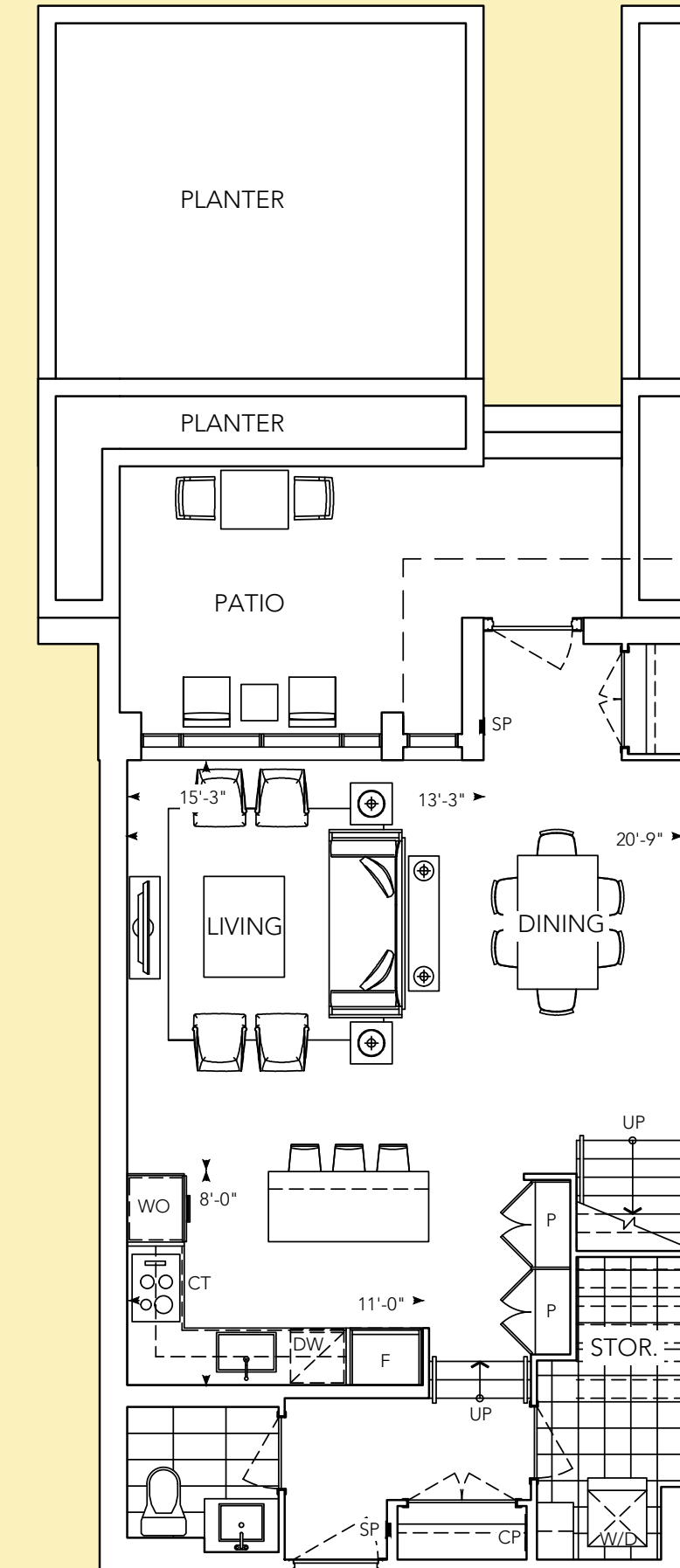
SOUTH FACE



GROUND FLOOR

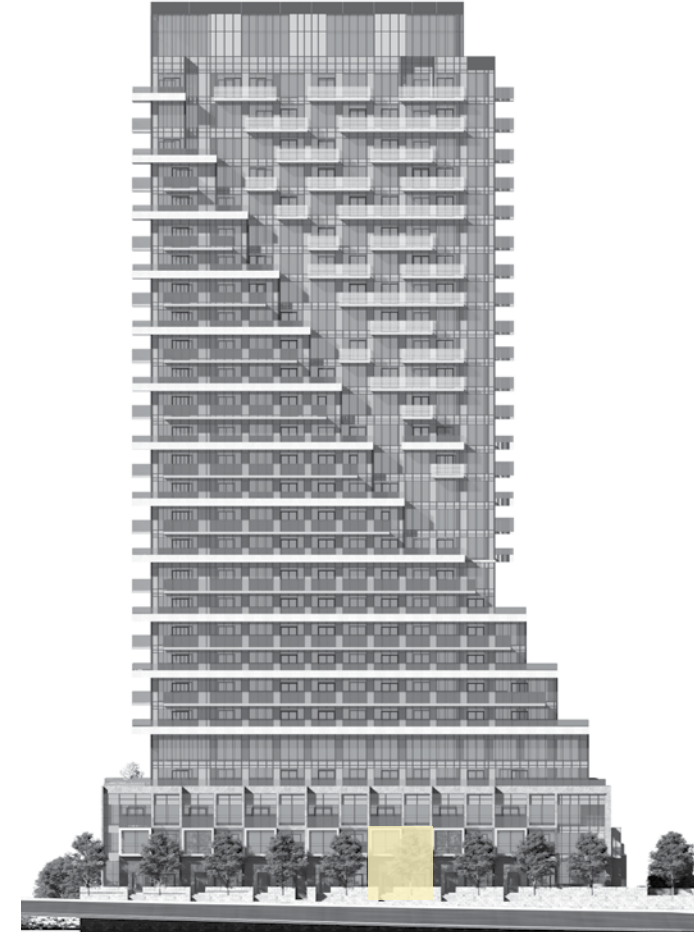


SECOND FLOOR

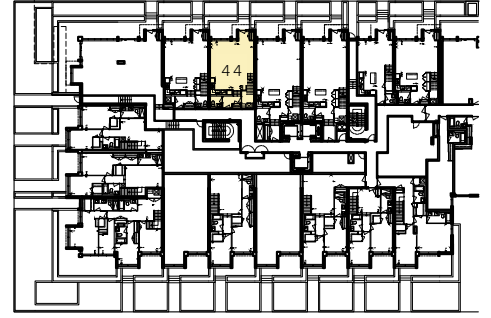


TH9

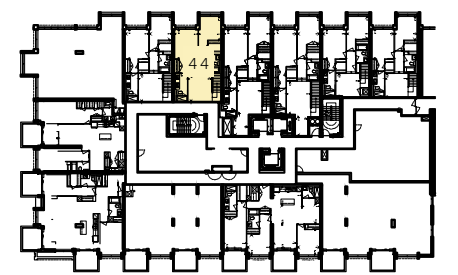
2 BEDROOM
2.5 BATHROOM
FAMILY ROOM



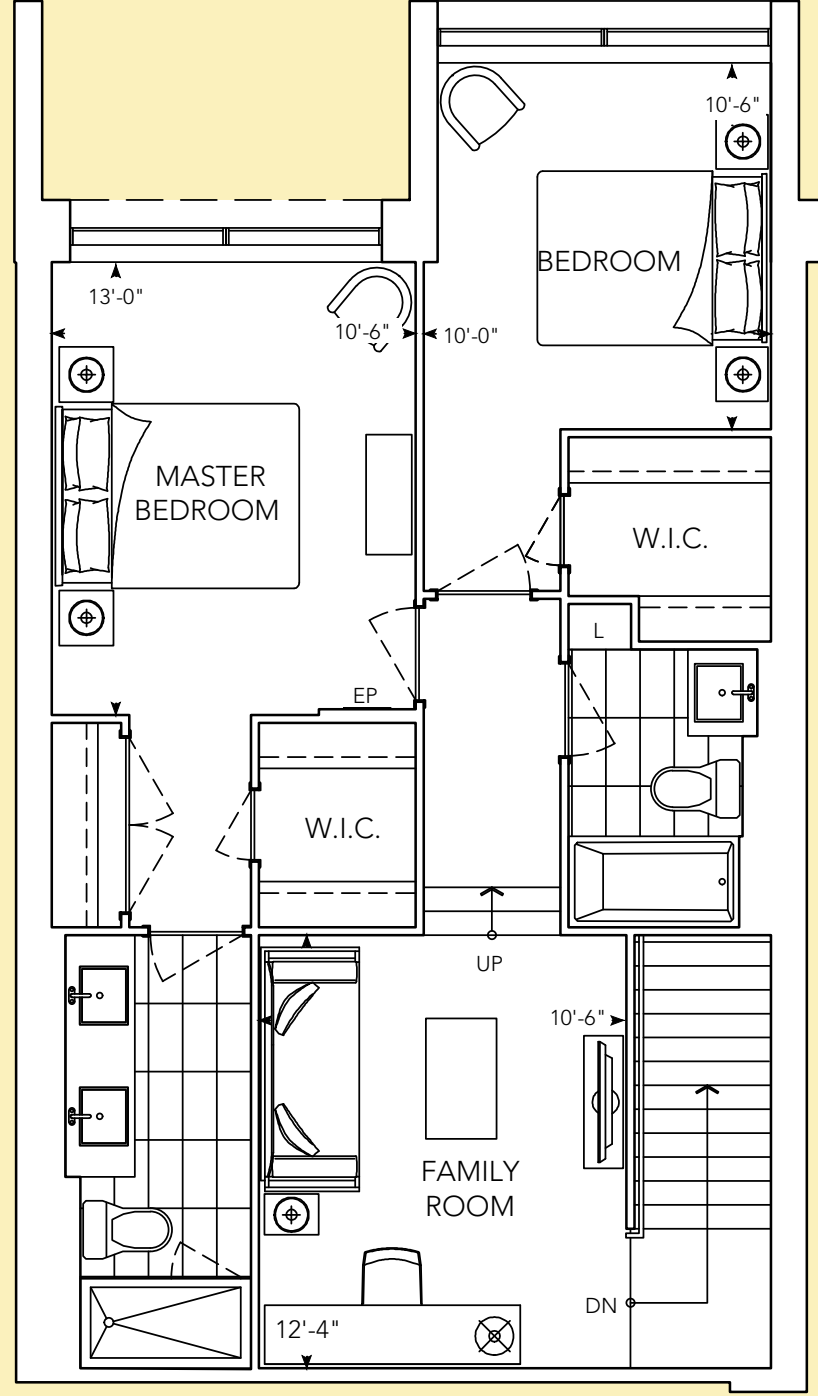
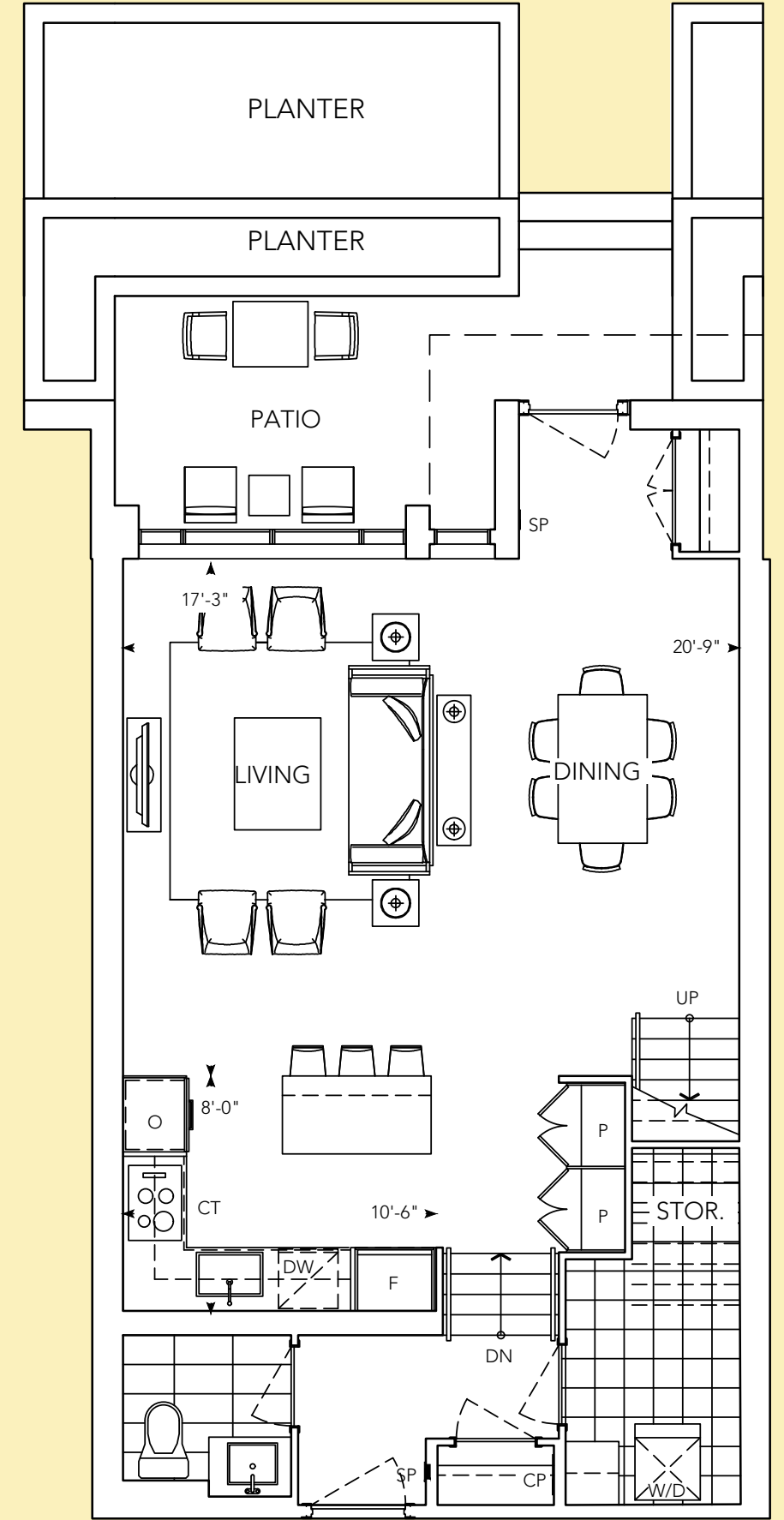
NORTH FACE



SECOND FLOOR



THIRD FLOOR



All dimensions are approximate and subject to normal construction variances. Dimensions may exceed the useable floor area. Sizes and specifications subject to change without notice. Furniture is displayed for illustration purposes only and does not necessarily reflect the electrical plan for the suite. Suites are sold unfurnished. Balcony and facade variations may apply, contact a sales representative for further details. E.&O.E. Tridel, Tridel Built for Life and Tridel Built Green. Built for Life are registered trademarks of Tridel and used under license. ©Tridel 2018. All rights reserved. January 2018.

FEATURES & FINISHES



TYPICAL COLLECTION

GENERAL

- Smooth ceiling finish to all areas.
- Interior walls are primed and then painted with two coats of off-white, quality latex paint (bathrooms, and all woodwork and trim painted with durable white semi-gloss paint). Paints have low levels of volatile organic compounds (VOCs)
- Balconies to receive one duplex receptacle.
- Terraces to receive paving stones and one duplex receptacle.

FLOOR COVERINGS

- Premium plank laminate floating floor with acoustic underlay in all rooms excluding bathroom(s) and laundry.
- Ceramic and/or porcelain floor tile in bathroom(s).

KITCHEN

- Contemporary laminate cabinetry including upper cabinets with valence.
- Single square edge granite or engineered quartz countertop and matching slab backsplash (seams may be present in backsplash).
- Stainless steel undermount sink with low flow chrome, single lever kitchen faucet, with pull out or down spray.
- Potlights & LED valence lighting.
- 1 bedroom and 1 bedroom plus den suites will feature appliances with:
 - o 24" Energy Star high efficiency, fully integrated paneled dishwasher.
 - o 24" Energy Star stainless steel refrigerator.
 - o 24" microwave with built-in high capacity hood fan in stainless steel finish.
 - o 24" ceramic cooktop.
 - o 24" built in oven.
- 2 bedroom, 2 bedroom plus den, and 3 bedroom suites will feature appliances with:
 - o 24" Energy Star high efficiency, fully integrated paneled dishwasher.
 - o 30" Energy Star stainless steel refrigerator.
 - o 30" microwave with built-in high capacity hood fan in stainless steel finish.
 - o 30" slide-in range.

BATHROOMS

- Vanity cabinetry including solid surface top with integrated basin and backsplash.
- Mirror with integrated light.
- Potlight over tub(s), shower(s), and vanity.
- White soaker bathtub.
- Frameless glass shower enclosure with chrome hardware.
- Low flow chrome, single lever sink faucets and low flow chrome, high pressure showerheads.
- Temperature-controlled and pressure-balanced chrome shower faucet.
- Porcelain or ceramic tiles in shower and/or tub enclosure.

LAUNDRY

- Stacked front-loading white dryer and Energy Star, high efficiency, front-loading white washer (complete with stainless steel flexible hoses).

SIGNATURE AND TOWNHOME COLLECTION

GENERAL

- Smooth ceiling finish to all areas.
- Interior walls are primed and then painted with two coats of off-white, quality latex paint (bathrooms, and all woodwork and trim painted with durable white semi-gloss paint). Paints have low levels of volatile organic compounds (VOCs)
- Balconies to receive one duplex receptacle.
- Terraces to receive paving stones and one duplex receptacle.
- Two-storey suites with stairs (where indicated on floorplan) will feature contemporary wood staircase with metal pickets and handrail.

FLOOR COVERINGS

- Engineered hardwood floating floor with acoustic underlay in all rooms excluding powder room(s), bathroom(s) and laundry.
- Porcelain or natural stone floor tile in master ensuite and powder room(s).
- Porcelain floor tile in laundry, storage areas and other bathroom(s).

KITCHEN

- Contemporary laminate and/or wood composite cabinetry including upper cabinets with valence.
- Double square edge granite or engineered quartz countertop with matching granite or engineered quartz slab backsplash (seams may be present in backsplash).
- Stainless steel undermount sink and low flow chrome, single lever kitchen faucet with pull out or down spray.
- Potlights & LED valence lighting.
- Signature suites (with the exception of suites on PH & GPH floors) will feature appliances with:
 - o 24" Miele, Energy Star high efficiency, fully integrated paneled dishwasher.
 - o 30" Miele, Energy Star fully integrated paneled refrigerator.
 - o 30" hood fan pull out.
 - o 30" Miele ceramic cooktop.
 - o 30" Miele wall oven.
 - o Miele stainless steel built-in microwave.

- PH & GPH suites will feature appliances with:
 - o 24" Miele, Energy Star high efficiency, fully integrated paneled dishwasher
 - o 36" Miele Energy Star fully integrated paneled refrigerator.
 - o 36" hood fan pull out.
 - o 36" Miele ceramic cooktop.
 - o 30" Miele wall oven.
 - o Miele stainless steel built-in microwave.

BATHROOMS

- Vanity cabinetry including single polished square edge natural stone or quartz countertop with white basin.
- Medicine cabinet with integrated mirror in master ensuite and main bathroom.
- Framed mirror in powder room(s).
- Integrated vanity mirror lighting with potlight over tub, shower, and vanity.
- White soaker bathtub with fixed glass tub screen.
- Frameless glass shower enclosure with chrome hardware.
- Low flow chrome, wide spread faucet in master ensuite and powder room.
- Single lever faucet in all other bathroom(s), and integrated low flow chrome, high pressure showerhead and handheld.
- Temperature-controlled and pressure-balanced, chrome shower faucet.
- Porcelain or natural stone tiles in shower or tub enclosure and on vanity wall in master ensuite.
- Porcelain tiles in shower or tub enclosure and on vanity wall of all other bathroom(s), excluding powder room(s).

LAUNDRY

- Stacked or side-by-side front-loading white dryer and Energy Star, high efficiency, front loading white washer (complete with stainless steel flexible hoses).

All features and finishes subject to change without notice, E.&O.E January 2018.

Symbols of our commitment to a better way of life.

TRIDEL
BUILT FOR LIFE

Winning Ontario Home Builder of The Year means a lot to us. It means we've created sustainable communities that thrive. It means we've remained true to our core values.

But most importantly, it means we have always built with only one goal in mind: *building a better life.*

ONTARIO HOME BUILDER OF THE YEAR | BILD HOME BUILDER OF THE YEAR
GREEN BUILDER OF THE YEAR | PROJECT OF THE YEAR
PEOPLE'S CHOICE AWARD | BEST CUSTOMER CARE

Awarded by the Ontario Home Builders' Association and the Building Industry and Land Development Association.
©Tridel 2018. "D" design, Tridel Built for Life, Tridel Built for Life Design, and Built Green, Built for Life are registered Trademarks of Tridel Corporation.
Project names and logos are Trademarks of their respective owners. All rights reserved. Building and view not to scale. Illustrations are artist's concept only.
Prices and specifications subject to change without notice. E. &O.E. January 2018.



tridel.com

TRIDEL®

ROWNTREE™
ENTERPRISES

AUBERGE II
ON THE PARK™